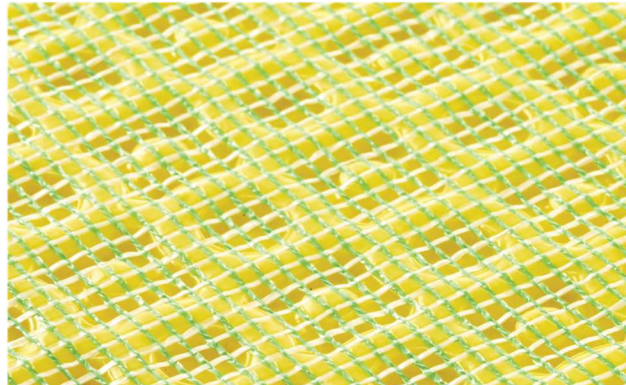


# DECOUPLING MAT



- Lightweight waterproof underlayment
- Mortar Lock Mesh system for fast and easy mortar application
- Prevents mold growth and grout discoloration

## DESCRIPTION

The Triton Decoupling Mat is designed to be user-friendly and adapt to changing tile flooring conditions. It absorbs compression, manages moisture, and prevents cracks. The Decoupling Mat is a three layer waterproof mat comprised of mortar lock mesh for ease of mortar application and enhanced adhesion to tile, advanced dimpled mat design for strength, and single layer woven fleece for shear resistance. The Decoupling Mat counteracts destructive forces from foot traffic, foundation settling, and less than perfect substrates.

## PRODUCT DATA

### PACKAGING

Available in the following roll sizes:

(39.4" x 16.4') (54ft <sup>2</sup> ) 1m x 5m
(39.4" x 32.8') (108ft <sup>2</sup> ) 1m x 10m
(39.4" x 98.4') (323ft <sup>2</sup> ) 1m x 30m

## STANDARDS

Decoupling Mat is certified according to ASTM C627 (Robinson-Type Floor Tester) as "Heavy" when installed over OSB flooring with 24" (60cm) joist spacing and as "Extra Heavy" when installed over OSB flooring with 19.2" (48cm) joist spacing. Decoupling Mat satisfies the performance criteria requirements of AS 3740-2010 'Waterproofing of domestic wet areas'.

## STORAGE

Deliver and store products in manufacturer's original, unopened packaging until ready for installation. Store materials in a manner and location to protect from weather, direct sunlight, surface contamination, and construction traffic. Where possible, store rolls of Decoupling Mat vertically to avoid crushing and other potential surface damage. Handle materials to avoid damage.

## ENVIRONMENTAL CONDITIONS

Decoupling Mat has a service temperature range of - 40°F to 176°F (-40°C to 80°C).

## APPLICATIONS

Decoupling Mat is designed for use over most substrates and will provide a smooth and level surface for the installation of tile and stone.

Decoupling Mat may be used as an integral part of the Triton Watertight System, provided that seams are sealed using waterproof tape.

Decoupling Mat may be used in both interior and exterior applications.

## LIMITATIONS

1. Decoupling Mat alone is not a waterproof barrier.
2. For watertight applications, Decoupling Mat seams must be sealed with waterproof tape.
3. Excessive point loads (such as scaffolding legs and heavy equipment) should be avoided without proper protection of Decoupling Mat.
4. Prior to installation of Decoupling Mat, the substrate must be level, clean, and free of any debris or other material that could impair adhesion.
5. Must be installed in compliance with appropriate ANSI and industry standards and TCNA recommendations. See installation instructions for details.
6. Do not use over cracks or control joints subject to out of plane movement or subject to in plane movement greater than 1/8" (3mm).
7. Decoupling Mat does not eliminate the need for expansion joints, including perimeter joints on the tiled surface.
8. Do not use over substrates with dimensionally unstable materials.
9. Do not use as a wear surface.
10. Do not use when hydrostatic pressure exists.
11. Decoupling Mat is not suitable for laying under thin tiles nor small-format tiles under 2 inches (50mm).
12. When used over young (green) concrete, the concrete must have cured for at least 7 days and be suitable to support tile installation traffic determined by the project design professional, construction manager and general contractor.
13. If the floor becomes wet during construction, it should be allowed to dry before application of finish flooring, including underlayment, hardwood flooring, ceramic tile, etc. After the subfloor is dry, the floor should be checked for flatness, especially at the joints.
14. When laying underlay mats on balconies or patios in high summer temperatures, the mat needs to be protected by some means in order to prevent them from becoming unglued or buckling while the adhesive is hardening.

## INSTALLATION

1. Ensure subfloor is flat. When applying over wood, ensure plywood or OSB is fastened correctly and meets deflection criteria for intended tile or stone. Exterior applications may require proper sloping.
2. Remove any debris from the subfloor (i.e.: drywall debris, paint, mortar, adhesives, etc.) Sweep subfloor clean.
3. **IMPORTANT:** Maintain 1/4" spacing between mat edge and walls, columns, cabinets, etc. Pre-cut Decoupling Mat to fit using a utility knife. Dry fit into area to ensure accuracy of cuts. Any special cuts, like "L" cuts around a counter, or hole cuts for plumbing, should also be done at this time
4. Prepare mortar that is approved for subfloor. Use maximum allowed water per mortar manufacturer's specification.
5. Wipe subfloor with a damp sponge. This will ensure good adhesion by removing dust, while dampening subfloor to help avoid moisture loss in mortar. Some subfloors may need to be primed to achieve a good bond.
6. Trowel required to adhere mat: **4.5mm x 4.5mm** square notch, or **3/16" x 3/16"** square notch. **Coverage may vary with mortar consistency, angle at which the trowel is held, substrate flatness, etc.**
7. Key mortar into substrate with flat side of trowel, followed by mortar application with notch side. **Mat must embed into WET mortar.** Do not spread too far as mortar may dry or "skin over."
8. Decoupling Mat is installed with the **yellow** side facing upwards. Adjoining sheets of Decoupling Mat should be installed without leaving space between sheets.
9. Embed mat into wet mortar using a float (wood or magnesium) or roller. Mat will appear to darken as it becomes well embedded into the mortar. 100% coverage is required.
10. Periodically check for 100% coverage of mortar under the mat. If poor coverage exists, or mortar appears to have "skinned over," remove mat, clean area and repeat steps 6-8 as needed.
11. For a watertight application use waterproof tape embedded into mortar at each of the seams. Ensure tape is centered on seam to achieve a minimum 2" (50mm) overlap with the Decoupling Mat on each side of the seam.
12. **The install is ready to tile immediately.** Use trowel and mortar specified by tile manufacturer.

Must be installed in compliance with appropriate ANSI and industry standards and TCNA recommendations.

## TECHNICAL DATA

DECOUPLING MAT		
MATERIAL	Textured membrane, backing fleece, and Mortar Lock Mesh => all polypropylene	
MATERIAL THICKNESS	3 mm	.12 inches
WIDTH OF ROLL	1 meter	39 inches
LENGTH OF ROLL	5 / 10 / 30 meters	16.4 / 32.8 / 98.4 feet
COMPRESSIVE STRENGTH	.37 N/mm2	53.7 lbs/ft2
TEMPERATURE RANGE	-40°C to 80°C	-40°F to 176°F
COLOR OF MAT	Textured Membrane: yellow; Backing Fleece: white; Mortar Lock Mesh: green	
MATERIAL PROPERTIES	Resistant to chemicals, decay, fungus, and bacteria	
APPLICATION	Underlayment to protect from cracking by decoupling and waterproofing	

## WARRANTY AND MATERIALS

Products and systems provided by Triton MgO Products are warranted to be free from defects in material and workmanship. Visit [triton-mgo.com](http://triton-mgo.com) for complete warranty details.

## SUBMITTAL APPROVAL

<b>JOB NAME:</b>	
<b>CONTRACTOR:</b>	<b>DATE:</b>

## LEGAL

### PRODUCT INFORMATION

See [triton-mgo.com](http://triton-mgo.com) for the most up-to-date product information.

### TRADEMARKS

The trademark Triton®, the design elements and colors, and related marks are trademarks of Triton MgO Products

### NOTE

Products described here may not be available in all geographic markets. Consult your Triton MgO Products representative for information.

### NOTICE

We shall not be liable for incidental and consequential damages, directly or indirectly sustained, nor for any loss caused by application of these goods not in accordance with current printed instructions or for other than the intended use. Our liability is expressly limited to replacement of defective goods. Any claim shall be deemed waived unless made in writing to us within thirty (30) days from date it was or reasonably should have been discovered. See full warranty at [triton-mgo.com](http://triton-mgo.com).

### SAFETY FIRST!

Follow good safety/industrial hygiene practices during installation. Wear appropriate personal protective equipment. Read SDS and literature before specification and installation.

## INDUSTRY ORGANIZATIONS



## COMPANY INFORMATION



[info@triton-mgo.com](mailto:info@triton-mgo.com) | [triton-mgo.com](http://triton-mgo.com)

560 East Richey Road  
Houston, Texas 77073