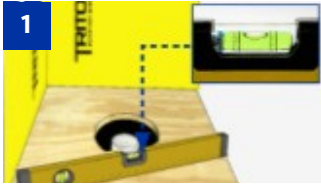


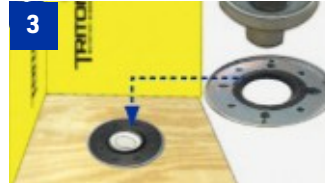
# PRE-SLOPED SHOWER PAN



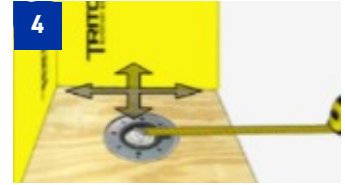
1 Prior to installation of Triton Pre-Sloped Shower Pan, floor must be level and traditional clamping drain must be properly installed.



2 Remove 4 drain base bolts, locking collar, and adjustable drain barrel.



3 Attach adaptive drain base using the 4 bolts from step 2.



4 To cut Pre-Sloped Shower Pan, measure from drain center to each edge.

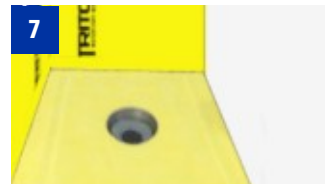
Cut with utility knife or circular saw. Put the pan adapter back onto the pan.



5 Dry fit pan to ensure good fit. Leave pan adapter attached to back of pan.



6 Using 1/4" square notch trowel, apply approved mortar to subfloor and back of Pre-Sloped Shower Pan.



7 Fit Pre-Sloped Shower Pan into fresh mortar and apply pressure to ensure pan is well embedded.



8 Rotate weep hole ring until flush with pan. Plastic grate holder is height adjustable to tile thickness.



9 Apply Triton Adhesive Sealant to four corners of plastic grate holder prior to fitting grate tray.



10 Ensure that all seams have a min. 2" overlap of Triton Waterproof Membrane fabric or Seam Tape adhered with mortar.

Triton Pre-Sloped Shower Pan is to be used only as part of a full Triton Watertight System installation.